

## **Chapter 2: The Organization and Graphic Presentation of Data**

### **Test Bank**

#### **Multiple Choice**

1. The sum of all proportions in a frequency distribution should sum to

- a. 0.
- b. 1.
- c. 100.
- d. N.

Ans: b

Learning Objective: 2-2: Calculate proportions and percentages

Cognitive Domain: Comprehension

Answer Location: Proportions and Percentages

Difficulty Level: Easy

2. When constructing a rate, the denominator refers to the

- a. number of actual events or occurrences.
- b. number of possible events or occurrence.
- c. difference of number of actual events or occurrences from number of possible events or occurrence.
- d. sum of number of actual events or occurrences from number of possible events or occurrence.

Ans: b

Learning Objective: 2-2: Calculate proportions and percentages

Cognitive Domain: Knowledge

Answer Location: Rates

Difficulty Level: Easy

3. In a sample of 250 respondents, females account for three-fifths of all observations in the sample. What is the total number of males in the sample?

- a. 100
- b. 150
- c. 2/5
- d. 3/5

Ans: a

Learning Objective: 2-2: Calculate proportions and percentages

Cognitive Domain: Application

Answer Location: Proportions and Percentages

Difficulty Level: Medium

4. A table showing the frequency at or below each category for a variable of interest is referred to as a

- a. frequency distribution.
- b. difference distribution.
- c. cumulative frequency distribution.
- d. cumulative difference distribution.

Ans: c

Learning Objective: 2-1: Construct and analyze frequency, percentage, and cumulative distributions

Cognitive Domain: Knowledge

Answer Location: Cumulative Distributions

Difficulty Level: Easy

5. Which of the following is not a proportion?

- a. 0.0
- b. 0.5
- c. 1.0
- d. 1.5

Ans: d

Learning Objective: 2-2: Calculate proportions and percentages

Cognitive Domain: Comprehension

Answer Location: Proportions and Percentages

Difficulty Level: Medium

6. In a sample of 100 people, 57 completed only high school, 23 went on to complete only some college, 13 went on to complete a two-year or four-year college, and 7 went on to graduate school. What proportion of the sample does not have a two-year or four-year college degree?

- a. 0.07
- b. 0.13
- c. 0.80
- d. 0.87

Ans: c

Learning Objective: 2-2: Calculate proportions and percentages

Cognitive Domain: Application

Answer Location: Proportions and Percentages

Difficulty Level: Medium

7. What is the formula for a proportion?

- a.  $p = f / N$
- b.  $p = N / f$
- c.  $p = (f / N) * 100$
- d.  $p = (f / 100) * N$

Ans: a

Learning Objective: 2-2: Calculate proportions and percentages

Cognitive Domain: Knowledge

Answer Location: Proportions and Percentages

Difficulty Level: Easy

8. A relative frequency obtained by dividing the frequency in each category by the total number of cases and multiplying by 100 is a

- a. count.
- b. frequency.
- c. proportion.
- d. percentage.

Ans: d

Learning Objective: 2-2: Calculate proportions and percentages

Cognitive Domain: Knowledge

Answer Location: Proportions and Percentages

Difficulty Level: Easy

9. A rate based on the total population is referred to as a(n) \_\_\_\_\_ rate.

- a. actual
- b. determinant
- c. whole
- d. crude

Ans: d

Learning Objective: 2-2: Calculate proportions and percentages

Cognitive Domain: Knowledge

Answer Location: Rates

Difficulty Level: Easy

10. A rate is usually expressed as a

- a. count.
- b. frequency.
- c. multiple of the sample size.
- d. multiple of some power of 10.

Ans: d

Learning Objective: 2-2: Calculate proportions and percentages

Cognitive Domain: Comprehension

Answer Location: Rates

Difficulty Level: Easy

11. Which of the following is not a rate?

- a. The number of female births per 1,000 women in ages from 25 to 29
- b. The number of deaths to infants between the ages of 0 and 1 per 100,000 population
- c. The number of violent crimes committed in urban U.S. cities in between 2005 and 2007
- d. The number of second marriages per 100,000 adults of marriageable age

Ans: c

Learning Objective: 2-2: Calculate proportions and percentages

Cognitive Domain: Comprehension

Answer Location: Rates

Difficulty Level: Medium

12. About 13 percent of survey respondents in a sample reported that they do not attend religious services regularly. About what proportion of respondents did not attend religious services regularly?

- a. 13
- b. .13
- c. 87
- d. .87

Ans: b

Learning Objective: 2-2: Calculate proportions and percentages

Cognitive Domain: Comprehension

Answer Location: Proportions and Percentages

Difficulty Level: Easy

13. The sum of all frequencies in a frequency distribution should sum to

- a. 0.
- b. 1.

c. 100.

d. N.

Ans: d

Learning Objective: 2-3: Compare and contrast frequency and percentage distributions for nominal, ordinal, and interval-ratio variables

Cognitive Domain: Comprehension

Answer Location: The Construction of Frequency Distributions

Difficulty Level: Easy

14. In a sample of 500 respondents, men account for 20% of all observations in the sample. What is the total number of females in the sample?

a. 100

b. 200

c. 300

d. 400

Ans: d

Learning Objective: 2-2: Calculate proportions and percentages

Cognitive Domain: Application

Answer Location: Proportions and Percentages

Difficulty Level: Medium

15. A proportion is a

a. relative frequency obtained by dividing the total number of cases by the frequency in each category.

b. relative frequency obtained by dividing the frequency in each category by the total number of cases.

c. number representing the total number of cases in a population.

d. distribution showing the frequency at or below each category of the variable.

Ans: b

Learning Objective: 2-2: Calculate proportions and percentages

Cognitive Domain: Knowledge

Answer Location: Proportions and Percentages

Difficulty Level: Easy

16. A cumulative percentage distribution shows the

- a. percentage at or above each category of the variable.
- b. total number of cases in a population.
- c. percentage at or below each category of the variable.
- d. total frequency of all variables.

Ans: c

Learning Objective: 2-1: Construct and analyze frequency, percentage, and cumulative distributions

Cognitive Domain: Knowledge

Answer Location: Cumulative Distributions

Difficulty Level: Easy

17. Inspecting the title and checking the sources are basic principles of

- a. studying for an exam.
- b. reading a statistical table.
- c. determining research question.
- d. calculating a rate.

Ans: b

Learning Objective: 2-4: Construct and interpret a pie chart, bar graph, histogram, the statistical map, line graph, and time-series chart

Cognitive Domain: Comprehension

Answer Location: Reading the Research Literature: Access to Public Benefits

Difficulty Level: Easy

18. What is the formula for a percentage?

- a.  $p = f/N$
- b.  $p = N/f$
- c.  $p = (f/N)100$

d.  $p = (N/f)100$

Ans: c

Learning Objective: 2-2: Calculate proportions and percentages

Cognitive Domain: Knowledge

Answer Location: Proportions and Percentages

Difficulty Level: Easy

19. A graph showing the differences in frequencies or percentages among the categories of a nominal or an ordinal variable where the “pieces” add up to 100% of the total frequencies is referred to as a

- a. bar graph.
- b. pie chart.
- c. frequency polygon.
- d. histogram.

Ans: b

Learning Objective: 2-4: Construct and interpret a pie chart, bar graph, histogram, the statistical map, line graph, and time-series chart

Cognitive Domain: Knowledge

Answer Location: The Pie Chart

Difficulty Level: Easy

20. A graph showing the difference in frequencies or percentages among the categories of a nominal or an ordinal variable where the categories are displayed as rectangles of equal width with their height proportional to the frequency or percentage of the category is referred to as a

- a. bar graph.
- b. pie chart.
- c. frequency polygon.
- d. histogram.

Ans: a



Learning Objective: 2-4: Construct and interpret a pie chart, bar graph, histogram, the statistical map, line graph, and time-series chart

Cognitive Domain: Knowledge

Answer Location: The Bar Graph

Difficulty Level: Easy

21. A graph showing the differences in frequencies or percentages among the categories of an interval-ratio variable where the categories are displayed as contiguous bars with width proportional to the width of the category and height proportional to the frequency or percentage of that category is called a

- a. bar graph.
- b. pie chart.
- c. frequency polygon.
- d. histogram.

Ans: d

Learning Objective: 2-4: Construct and interpret a pie chart, bar graph, histogram, the statistical map, line graph, and time-series chart

Cognitive Domain: Knowledge

Answer Location: The Histogram

Difficulty Level: Easy

22. A graph showing the differences in the frequencies or percentages among the categories of an interval-ratio variable where points are used to represent the frequencies of each category and placed above the midpoint of the category and then joined by a straight line is referred to as a

- a. bar graph.
- b. pie chart.
- c. line graph.
- d. histogram.

Ans: c

Learning Objective: 2-4: Construct and interpret a pie chart, bar graph, histogram, the statistical map, line graph, and time-series chart

Cognitive Domain: Knowledge

Answer Location: The Line Graph

Difficulty Level: Easy

23. Which of the following is NOT true about time-series charts?

- a. Time, usually measured in months or years, is placed on the horizontal axis.
- b. The height of the bars is proportional to the frequency or percentage of observations.
- c. Frequencies or percentages are usually placed along the vertical axis.
- d. The values across the various time points are joined by a line.

Ans: b

Learning Objective: 2-4: Construct and interpret a pie chart, bar graph, histogram, the statistical map, line graph, and time-series chart

Cognitive Domain: Comprehension

Answer Location: The Time-series Chart

Difficulty Level: Easy

24. Which of the following graphic devices is most appropriate for displaying interval-ratio level data?

- a. A histogram
- b. A frequency polygon
- c. A bar graph
- d. A pie chart

Ans: a

Learning Objective: 2-4: Construct and interpret a pie chart, bar graph, histogram, the statistical map, line graph, and time-series chart

Cognitive Domain: Comprehension

Answer Location: The Histogram

Difficulty Level: Easy

25. Which graphic device is best suited for comparing how an interval-ratio variable is distributed across two or more groups or time periods?

- a. A histogram
- b. A pie chart
- c. A line graph
- d. A time-series chart

Ans: c

Learning Objective: 2-4: Construct and interpret a pie chart, bar graph, histogram, the statistical map, line graph, and time-series chart

Cognitive Domain: Comprehension

Answer Location: The Line Graph

Difficulty Level: Easy

26. The most common distortions in graphical representations occur when the

- a. data are wrong.
- b. sources are not cited properly.
- c. distance along one of the axes is altered.
- d. device is inappropriately used.

Ans: c

Learning Objective: 2-4: Construct and interpret a pie chart, bar graph, histogram, the statistical map, line graph, and time-series chart

Cognitive Domain: Comprehension

Answer Location: A Closer Look 2.2 A Cautionary Note: Distortions in Graphs

Difficulty Level: Medium

27. In a \_\_\_\_\_, the bars which represent the categories of a variable are spaced so that one bar is not directly next to another; whereas in a \_\_\_\_\_, the bars actually touch one another.

- a. bar graph; histogram
- b. histogram; bar graph
- c. frequency polygon; bar graph

d. bar graph; frequency polygon

Ans: a

Learning Objective: 2-4: Construct and interpret a pie chart, bar graph, histogram, the statistical map, line graph, and time-series chart

Cognitive Domain: Knowledge

Answer Location: The Bar Graph | The Histogram

Difficulty Level: Easy

28. A survey of 3,055 respondents asked whether or not anyone had been widowed. Eighty persons responded “yes.” What percentage of respondents have never been widowed?

- a. 2.69
- b. 80.00
- c. 97.31
- d. 2,975

Ans: c

Learning Objective: 2-2: Calculate proportions and percentages

Cognitive Domain: Application

Answer Location: Proportions and Percentages

Difficulty Level: Easy

29. A survey of 3,055 respondents asked whether or not anyone had been widowed. Eighty persons responded “yes.” Which of the following graphic devices would best display this information?

- a. Time-series chart
- b. Frequency distribution
- c. Bar graph
- d. Histogram

Ans: c

Learning Objective: 2-4: Construct and interpret a pie chart, bar graph, histogram, the statistical map, line graph, and time-series chart

Cognitive Domain: Analysis

Answer Location: The Bar Graph

Difficulty Level: Medium

30. Imagine one of your colleagues is constructing a histogram to graph results of the survey question “Which state do you live in?” What is the concern with your colleague’s approach?

- a. It is unlikely that the slices of the pie sum to 100%.
- b. The colleague has used an inappropriate graphic device.
- c. The colleague has not ensured that the frequencies at each time point sum to  $N$ .
- d. The bars representing the categories are likely not as contiguous as they should be

Ans: b

Learning Objective: 2-4: Construct and interpret a pie chart, bar graph, histogram, the statistical map, line graph, and time-series chart

Cognitive Domain: Comprehension

Answer Location: The Histogram

Difficulty Level: Medium

31. Imagine one of your colleagues is constructing a pie chart to graph results of the survey question “Which state do you live in?” What should be your first response upon reviewing their work?

- a. To note whether the “slices” of the pie sum to 100%
- b. To suggest that he or she has in fact used an inappropriate graphic device
- c. To ensure that the frequencies at each time point sum to  $N$
- d. To check whether the bars representing the categories are contiguous as they should be

Ans: a

Learning Objective: 2-4: Construct and interpret a pie chart, bar graph, histogram, the statistical map, line graph, and time-series chart

Cognitive Domain: Comprehension

Answer Location: The Pie Chart

Difficulty Level: Medium

32. Imagine one of your colleagues is constructing a histogram to graph results of data collected on respondent's occupational prestige score, a score which can take on any non-zero value. What should be your first response upon reviewing the work?

- a. To note whether the "slices" of the pie sum to 100%
- b. To suggest that he or she has in fact used an inappropriate graphic device
- c. To ensure that the frequencies at each time point sum to  $N$
- d. To check whether the bars representing the categories are contiguous as they should be

Ans: d

Learning Objective: 2-4: Construct and interpret a pie chart, bar graph, histogram, the statistical map, line graph, and time-series chart

Cognitive Domain: Comprehension

Answer Location: The Histogram

Difficulty Level: Medium

33. Imagine one of your colleagues is constructing a pie-chart to graph results of data collected on respondent's occupational prestige score, a score which can take on any non-zero value. What should be your first response upon reviewing the work?

- a. To note whether the "slices" of the pie sum to 100%
- b. To suggest that your colleague has used an inappropriate graphic device
- c. To ensure that the frequencies at each time point sum to  $N$
- d. To check whether the bars representing the categories are contiguous as they should be

Ans: a

Learning Objective: 2-4: Construct and interpret a pie chart, bar graph, histogram, the statistical map, line graph, and time-series chart

Cognitive Domain: Comprehension

Answer Location: The Pie Chart

Difficulty Level: Medium

34. Which of the following statements is true about time-series charts?

- a. Time, usually measured in months or years, is placed on the vertical axis.
- b. The height of the bars is proportional to the frequency or percentage of observations.
- c. Frequencies or percentages are usually placed along the vertical axis.
- d. The changes in the variable must always increase over time.

Ans: c

Learning Objective: 2-4: Construct and interpret a pie chart, bar graph, histogram, the statistical map, line graph, and time-series chart

Cognitive Domain: Knowledge

Answer Location: The Time-series Chart

Difficulty Level: Medium

35. Which of the following graphic devices is NOT appropriate for interval-ratio level data?

- a. Histogram
- b. Frequency polygon
- c. Time-series chart
- d. Pie chart

Ans: d

Learning Objective: 2-4: Construct and interpret a pie chart, bar graph, histogram, the statistical map, line graph, and time-series chart

Cognitive Domain: Comprehension

Answer Location: The Pie Chart

Difficulty Level: Easy

## Short Answer

1. Fill in the empty cells in the following table.

Education level	<i>f</i>	<i>p</i>	%
-----------------	----------	----------	---

Completed High School	187		
Completed College	119		
Completed Graduate School	62		

Ans:

Education level	<i>f</i>	<i>p</i>	%
Completed High School	187	.508	50.8
Completed College	119	.323	32.3
Completed Graduate School	62	.168	16.8

Learning Objective: 2-2: Calculate proportions and percentages

Cognitive Domain: Application

Answer Location: Proportions and Percentages

Difficulty Level: Easy

2. Fill in the empty cells in the following table.

Income level	<i>f</i>	<i>p</i>	%
<34,999			
35,000–99,999		.20	
>100,000	7	.10	

Ans:

Income level	<i>f</i>	<i>p</i>	%
<34,999	49	.70	70
35,000–99,999	14	.20	20
>100,000	7	.10	10

Learning Objective: 2-2: Calculate proportions and percentages

Cognitive Domain: Application

Answer Location: Proportions and Percentages



Difficulty Level: Medium

3. Fill in the empty cells in the following table.

Language Proficiency	<i>f</i>	<i>Cf</i>	<i>p</i>	%
1 Language	129			50.0
2 Languages		214		
3+ Languages				

Ans:

Language Proficiency	<i>f</i>	<i>Cf</i>	<i>p</i>	%
1 Language	129	129	.500	50.0
2 Languages	85	214	.329	32.9
3+ Languages	44	258	.171	17.1

Learning Objective: 2-1: Construct and analyze frequency, percentage, and cumulative distributions | 2-2: Calculate proportions and percentages

Cognitive Domain: Application

Answer Location: Proportions and Percentages | Cumulative Distributions

Difficulty Level: Medium

4. Fill in the empty cells in the following table.

Social Capital	<i>f</i>	<i>Cf</i>	<i>p</i>	%
Low		188		
Medium		234		
Hi		298		

Ans:

Social Capital	<i>f</i>	<i>Cf</i>	<i>p</i>	%
Low	188	188	.631	63.1
Medium	66	254	.221	22.1
Hi	44	298	.148	14.8

Learning Objective: 2-1: Construct and analyze frequency, percentage, and cumulative distributions | 2-2: Calculate proportions and percentages

Cognitive Domain: Application

Answer Location: Proportions and Percentages | Cumulative Distributions

Difficulty Level: Medium

5. Fill in the empty cells in the following table.

Number of Marriages	$f$	$Cf$	$p$	%
0		165		
1	60			
2+		250		10.0

Ans:

Number of Marriages	$f$	$Cf$	$p$	%
0	165	165	.660	66.0
1	60	225	.240	24.0
2+	25	250	.100	10.0

Learning Objective: 2-1: Construct and analyze frequency, percentage, and cumulative distributions | 2-2: Calculate proportions and percentages

Cognitive Domain: Application

Answer Location: Proportions and Percentages | Cumulative Distributions

Difficulty Level: Medium

6. Consider the table below obtained from the U.S. Bureau of the Census, Statistical Abstract of the United States, 2003. If the total number of military reserve personnel is 129,047, how many Blacks and Latinos are in the military reserve?

Military Reserve Personnel by Race, 2002	
White	73.2%
Black	15.9%

Latino	7.9%
Asian	2.3%
Native American	0.7%

Ans: 30,713

Learning Objective: 2-2: Calculate proportions and percentages

Cognitive Domain: Application

Answer Location: Proportions and Percentages

Difficulty Level: Medium

7. Using the following information from the U.S. Census Bureau, calculate both the number and percentage of non-white military reserve personnel.

Military Reserve Personnel by Race, 2002	
White	73.2%
Black	15.9%
Latino	7.9%
Asian	2.3%
Native American	0.7%

The total number of military reserve personnel is 129,047.

Ans: 34,585; 26.8%

Learning Objective: 2-2: Calculate proportions and percentages

Cognitive Domain: Application

Answer Location: Proportions and Percentages

Difficulty Level: Medium

8. Using the following information from the U.S. Census Bureau, calculate both the number and percentage of non-Asian military reserve personnel.

Military Reserve Personnel by Race, 2002	
---	--

White	73.2%
Black	15.9%
Latino	7.9%
Asian	2.3%
Native American	0.7%

The total number of military reserve personnel is 129,047.

Ans: 126,079; 97.7%

Learning Objective: 2-2: Calculate proportions and percentages

Cognitive Domain: Application

Answer Location: Proportions and Percentages

Difficulty Level: Medium

9. Construct a cumulative frequency distribution using the following information. Begin with whites and work through the table in the order of the racial categories listed.

Military Reserve Personnel by Race, 2002	
White	73.2%
Black	15.9%
Latino	7.9%
Asian	2.3%
Native American	0.7%

The total number of military reserve personnel is 129,047.

Ans:

Military Reserve Personnel by Race, 2002		
Race	<i>f</i>	<i>cf</i>
White	94,642	94,462
Black	20,519	114,981
Latino	10,195	125,176

Asian	2,968	128,144
Native American	903	129,047

Learning Objective: 2-1: Construct and analyze frequency, percentage, and cumulative distributions

Cognitive Domain: Application

Answer Location: Cumulative Distributions

Difficulty Level: Medium

10. Using the following information from the U.S. Census Bureau, how many military reserve personnel are white, black, or Latino?

Military Reserve Personnel by Race, 2002	
White	73.2%
Black	15.9%
Latino	7.9%
Asian	2.3%
Native American	0.7%

The total number of military reserve personnel is 129,047.

Ans: 125,716

Learning Objective: 2-2: Calculate proportions and percentages

Cognitive Domain: Application

Answer Location: Proportions and Percentages

Difficulty Level: Medium

11. Fill in the empty cells in the following table.

Homosexuals Should Have the Right to Marry, 2006		
	<i>f</i>	<i>cum %</i>
Strongly Agree	307	15.5
Agree	391	

Neither Agree Nor Disagree	260	48.3
Disagree		
Strongly Disagree	695	

Ans:

Homosexuals Should Have the Right to Marry, 2006		
	<i>f</i>	<i>cum %</i>
Strongly Agree	307	15.5
Agree	391	35.2
Neither Agree Nor Disagree	260	48.3
Disagree	329	64.9
Strongly Disagree	695	100.0

Learning Objective: 2-1: Construct and analyze frequency, percentage, and cumulative distributions

Cognitive Domain: Application

Answer Location: Cumulative Distributions

Difficulty Level: Difficult

12. According to this table, what proportion of respondents neither agree nor disagree?

Homosexuals Should Have the Right to Marry, 2006		
	<i>f</i>	<i>cum %</i>
Strongly Agree	307	15.5
Agree	391	35.2
Neither Agree Nor Disagree	260	48.3
Disagree	329	64.9
Strongly Disagree	695	100.0

Ans: .131

Learning Objective: 2-2: Calculate proportions and percentages

Cognitive Domain: Application

Answer Location: Proportions and Percentages

Difficulty Level: Easy

13. According to this table, what percentage of respondents strongly agree or strongly disagree?

Homosexuals Should Have the Right to Marry, 2006		
	<i>f</i>	<i>cum %</i>
Strongly Agree	307	15.5
Agree	391	35.2
Neither Agree Nor Disagree	260	48.3
Disagree	329	64.9
Strongly Disagree	695	100.0

Ans: 50.6%

Learning Objective: 2-2: Calculate proportions and percentages

Cognitive Domain: Application

Answer Location: Proportions and Percentages

Difficulty Level: Easy

14. Refer to the table below and construct a cumulative frequency distribution. Start with those who strongly disagree and work your way down through the remaining categories.

Homosexuals Should Have the Right to Marry, 2006		
	<i>f</i>	<i>cum %</i>
Strongly Agree	307	15.5
Agree	391	35.2
Neither Agree Nor Disagree	260	48.3

Disagree	329	64.9
Strongly Disagree	695	100.0

Ans:

Homosexuals Should Have the Right to Marry, 2006	
	<i>cf</i>
Strongly Agree	307
Agree	698
Neither Agree Nor Disagree	958
Disagree	1287
Strongly Disagree	1982

Learning Objective: 2-1: Construct and analyze frequency, percentage, and cumulative distributions

Cognitive Domain: Application

Answer Location: Cumulative Distributions

Difficulty Level: Easy

15. According to the table below, how many people do not disagree in some capacity or another?

Homosexuals Should Have the Right to Marry, 2006		
	<i>f</i>	<i>cum %</i>
Strongly Agree	307	15.5
Agree	391	35.2
Neither Agree Nor Disagree	260	48.3
Disagree	329	64.9
Strongly Disagree	695	100.0

Ans: 958

Learning Objective: 2-1: Construct and analyze frequency, percentage, and cumulative distributions



Cognitive Domain: Application

Answer Location: Proportions and Percentages

Difficulty Level: Easy

16. Explain how cumulative frequency distributions are obtained. What do they allow us to do?

Ans: They are obtained by adding to the frequency in each category the frequencies of all the categories below it. They allow us to locate the relative position of a given score in a distribution.

Learning Objective: 2-1: Construct and analyze frequency, percentage, and cumulative distributions

Cognitive Domain: Knowledge

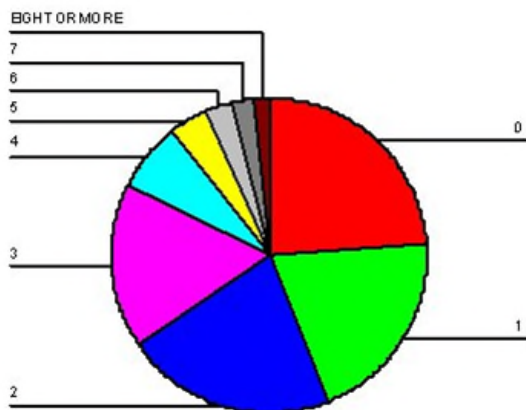
Answer Location: Cumulative Distributions

Difficulty Level: Easy

17. Consider the information in the table below. Construct a pie chart for blacks in the sample.

Number of Children	Whites	Blacks
0	903	151
1	513	126
2	872	136
3	531	105
4	282	45
5	83	25
6	51	18
7	25	13
8+	16	11

Ans:



Learning Objective: 2-4: Construct and interpret a pie chart, bar graph, histogram, the statistical map, line graph, and time-series chart

Cognitive Domain: Application

Answer Location: The Pie Chart

Difficulty Level: Easy

18. Considering the information provided in the table below, do a higher percentage of whites or blacks have five or more children?

Number of Children	Whites	Blacks
0	903	151
1	513	126
2	872	136
3	531	105
4	282	45
5	83	25
6	51	18
7	25	13
8+	16	11

Ans: Blacks at 10.6 percent

Learning Objective: 2-2: Calculate proportions and percentages

Cognitive Domain: Application

Answer Location: Proportions and Percentages

Difficulty Level: Medium

19. Would a bar chart or a histogram be more appropriate for displaying the data presented in the table below? Why?

Number of Children	Whites	Blacks
0	903	151
1	513	126
2	872	136
3	531	105
4	282	45
5	83	25
6	51	18
7	25	13
8+	16	11

Ans: The number of children can be considered an interval-ratio level variable, therefore a histogram would be more appropriate.

Learning Objective: 2-4: Construct and interpret a pie chart, bar graph, histogram, the statistical map, line graph, and time-series chart

Cognitive Domain: Analysis

Answer Location: The Histogram

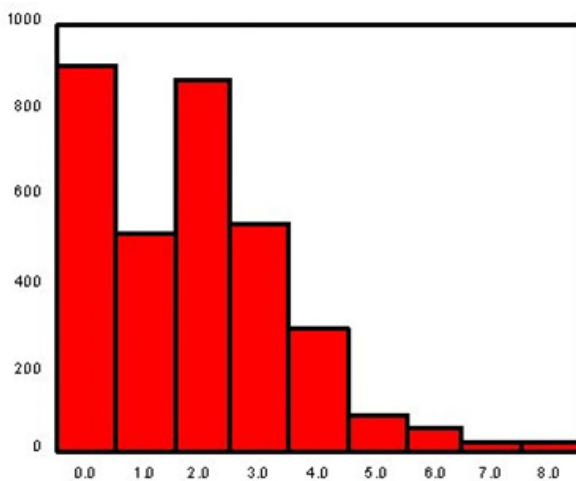
Difficulty Level: Medium

20. Construct either a bar chart or a histogram, depending on which is more appropriate in this case, for displaying the data presented in the table below.

Number of Children	Whites	Blacks
0	903	151
1	513	126

2	872	136
3	531	105
4	282	45
5	83	25
6	51	18
7	25	13
8+	16	11

Ans:



Learning Objective: 2-4: Construct and interpret a pie chart, bar graph, histogram, the statistical map, line graph, and time-series chart

Cognitive Domain: Application

Answer Location: The Bar Graph

Difficulty Level: Medium

21. What other type of graph could be used to display the information in the chart below?



Ans: Histogram

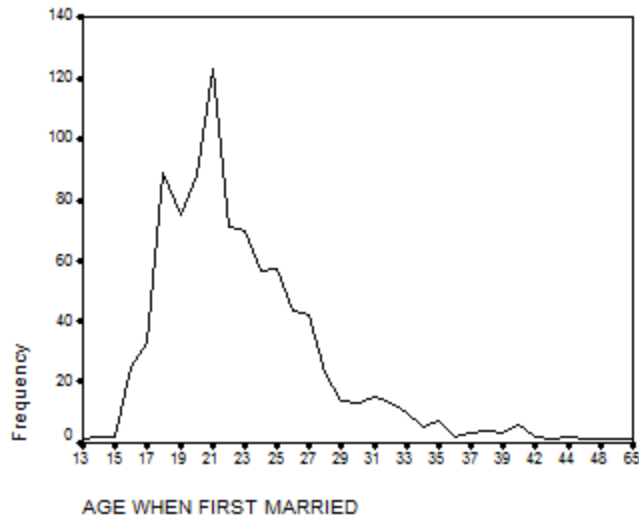
Learning Objective: 2-4: Construct and interpret a pie chart, bar graph, histogram, the statistical map, line graph, and time-series chart

Cognitive Domain: Analysis

Answer Location: The Histogram

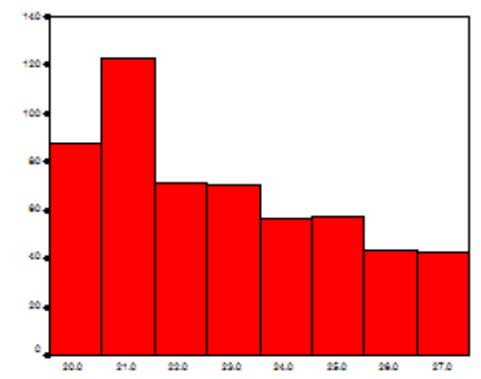
Difficulty Level: Medium

22. Presented below is a chart and a portion of the data for 550 respondents which were used to construct it. What is another type of graph that you can use to display this information? Construct this graph using the data below with the frequencies placed along the vertical axis.



Age at First Marriage	Percent (%)
20	16.0
21	22.4
22	12.9
23	12.7
24	10.2
25	10.4
26	7.8
27	7.6

Ans: Bar graph.



Learning Objective: 2-4: Construct and interpret a pie chart, bar graph, histogram, the statistical map, line graph, and time-series chart

Cognitive Domain: Analysis

Answer Location: The Bar Graph

Difficulty Level: Medium

23. Considering the information in the table below, what would happen to the percentage of respondents age 20 if we simply dropped all respondents who were first married at age 21 from the sample?

Age at First Marriage	Percent (%)
20	16.0
21	22.4
22	12.9
23	12.7
24	10.2
25	10.4
26	7.8
27	7.6

Ans: The percentage would increase

Learning Objective: 2-2: Calculate proportions and percentages

Cognitive Domain: Comprehension

Answer Location: Proportions and Percentages

Difficulty Level: Easy

24. Considering the information in the table below, what proportion of respondents were first married at the ages of 24 and 25?

Age at First Marriage	Percent (%)
20	16.0
21	22.4
22	12.9
23	12.7
24	10.2
25	10.4
26	7.8
27	7.6

Ans: .21

Learning Objective: 2-2

Cognitive Domain: Application

Answer Location: Proportions and Percentages

Difficulty Level: Difficult

25. Which graphic device would be most appropriate to display information about the following statement? "Undocumented migration from Mexico to the United States has increased each decade from the end of the Bracero Accord in 1964 through 2005."

Ans: A time-series chart

Learning Objective: 2-4: Construct and interpret a pie chart, bar graph, histogram, the statistical map, line graph, and time-series chart

Cognitive Domain: Analysis

Answer Location: The Time-Series Chart

Difficulty Level: Medium



26. Which graphic device would be most appropriate to display information about “The sex ratio at birth – that is, the ratio to the number of males to the number of females – is 1.05 in the United States”?

Ans: A bar graph or pie chart

Learning Objective: 2-4: Construct and interpret a pie chart, bar graph, histogram, the statistical map, line graph, and time-series chart

Cognitive Domain: Analysis

Answer Location: The Bar Graph | The Pie Chart

Difficulty Level: Medium

27. Which graphic device would be most appropriate to display information about “Young adults in South Korea generally have more years of schooling than young adults in the United States”?

Ans: Histogram

Learning Objective: 2-4: Construct and interpret a pie chart, bar graph, histogram, the statistical map, line graph, and time-series chart

Cognitive Domain: Analysis

Answer Location: The Histogram

Difficulty Level: Medium

28. Explain why the following statement is true: “When constructing a pie chart, the frequencies associated with each category must sum to  $N$ . Likewise, if working with proportions or percentages, these must sum to 1.0 or 100% respectively.”

Ans: Students should discuss the calculation of relative frequencies and show why these must sum to 1.0 and 100% respectively.

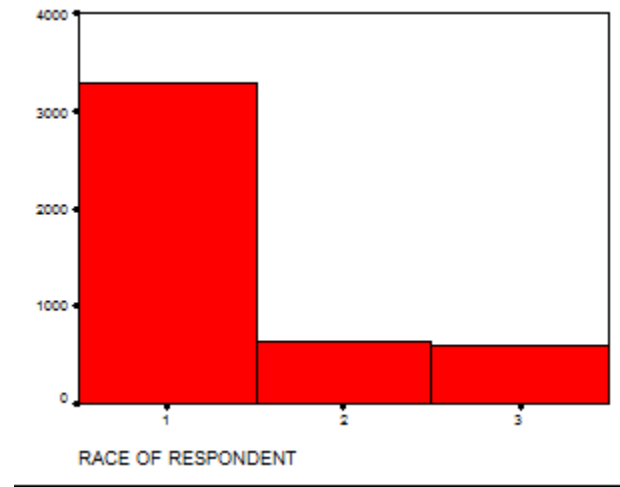
Learning Objective: 2-2: Calculate proportions and percentages | 2-4: Construct and interpret a pie chart, bar graph, histogram, the statistical map, line graph, and time-series chart

Cognitive Domain: Comprehension

Answer Location: The Pie Chart | Proportions and Percentages

Difficulty Level: Medium

29. The following graph depicts the number of respondents by racial group, where 1 = white, 2 = black, and 3 = other. Explain why this choice of graphic is or is not appropriate for these data.



Ans: A histogram is not appropriate for nominal data.

Learning Objective: 2-4: Construct and interpret a pie chart, bar graph, histogram, the statistical map, line graph, and time-series chart

Cognitive Domain: Comprehension

Answer Location: The Histogram

Difficulty Level: Medium